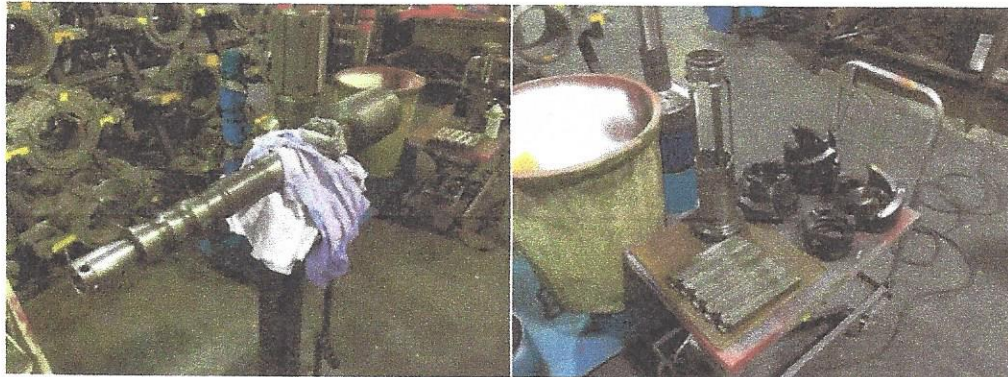



INSPECTION SERVICES AND ENGINEERING CERTIFICATION
AB: 780.870.1547 SK: 306.250.9294 Head Office Mail: P.O. Box 10524 Lloydminster, AB T9V 3A6
INSPECTION REPORT

EQUIPMENT LOCATION:	Lloydminster, Alberta			NDT PROCEDURE#:			INSP-001		
EXAMINATION COVERAGE:	<i>RANDOM:</i>	5%	10%	25%	50%	75%	100%	X	
ACCEPTANCE CRITERIA:	CSA W59	ISO 9927-1		CAODC RP			OTHER:	X	
INSPECTION METHOD:	VT	X	UT	X	MT WET FLOURESCENT	X	MT WET BLACK	MT DRY RED	
EQUIPMENT INFO:	BLACK LIGHT MAKE - INOVA			LIGHT METER # 1822158			MAG COIL # RC1-30120121		

CLIENT:	K&S Power Tongs	UNIT/RIG:	KSV008
EQUIPMENT:	Volant Tool	MAKE/MODEL:	Volant CRTi2-4.5
RATING:	N/A	SERIAL NUMBER:	KSV008

EQUIPMENT PHOTOS

INSPECTION RESULTS

ACCEPTABLE:	X	REJECTED:		DATE OF INSPECTION:	March 15, 2019
TECHNICIAN:			COMMENTS:		
 <p>DN: cn=Tyson C. McLean, o=Index NDT Inspections Ltd., ou, email=tyson@i ndexndt.ca, c=CA</p>			Part: Mandrel Cage Upper Cam Lower Cam Cam Latch Cam Int Die - 5.5(14-17 lbs.) Die - 5.5(14-17 lbs.) Die - 5.5(14-17 lbs.) Die - 5.5(14-17 lbs.) Die - 5.5(14-17 lbs.)		
			Serial#: 82304-03-4437A01-04 81325-4435A17-10 81208-4437A01-13 81221-4437A05-11 81212-4437A06-08 80942-4437A03-11 80980-01-4488A01-11 80980-01-4488A01-12 80980-01-4488A01-13 80980-01-4488A01-14 80980-01-4488A01-15		
			Material Thickness: 0.860/0.863/0.865/0.860/0.859		
			REPAIRS:		

QUALITY ASSURED INSPECTIONS FOR QUALITY ASSURED BUSINESSES

Except as provided herein, Index NDT Inspections Ltd. makes no warranty, express or implied with respect to the mechanical or other conditions of the equipment inspected by us. Index NDT Inspections Ltd. shall only be responsible in the event of damage resulting directly from their inspection, and in no event, shall the liability of Index NDT Inspections Ltd. exceed the cost of inspection. Our organization assumes only the responsibility of locating defects in the inspected components and welds made accessible at the time of inspection. All equipment should be cleaned to allow access to all welds and critical components. It is of the utmost importance that the unit's owner be aware that excessive coating over 10 mils can severely mask the detection of discontinuities while utilizing standard inspection techniques. We are not responsible for the mechanical or other conditions assembled condition except at customer's request.



Volant Oil Tools Inc.
4110 56th Avenue NW
Edmonton, AB T6B 3R8 CANADA

Phone 780.490.5185
Web www.volantproducts.ca

Test Certificate No.

00436

Equipment Designation

Description: Casing Running Tool (Internal)

Tool Name Mandrel-05, CRTI2-4.5

Design Capacity: 240 kip

Test Temperature: 21.3 deg C

Manufacturer: Volant Oil Tools Inc.

Test Parameters

Test Date: 2014-06-25, 2:17 PM

Test Type: Load Testing

Test Load: 360 kip Minimum

Load Duration: 300 seconds (Minimum)

Test Equipment	Unique Identifier	Additional Information
Volant 5M lb Load Frame	VLf-01	Insp. Record: VOT-18328
GP:50-314 Delta P. Sensor	GP:50 Ser. # 18765	
NI 9203 4-20 mA module	NI Ser. #: 172B90E	

Test Description:

Load to 240 kip, unload, load to 360 kip, hold for 5 minutes as per Volant proof test procedure 40057.

Test Observations:

This test complies with the following standard(s)/procedure(s):
API Specification 8C, 5th Edition
40057 Volant CRTI1, 2-4.5 Mandrel Proof Test Procedure

Performed By:

Print Name: Ramson De Leon

Signature:

Approved By:

Print Name: Isaac Jenkins

Signature:

Primary Load Carrying Components

Mandrel - 05

Serial Number

82304-03-4437A01-04

DELAYED USE

Date of 1st Use: Oct-17, 2017

Job #: 21615

Signed By:

